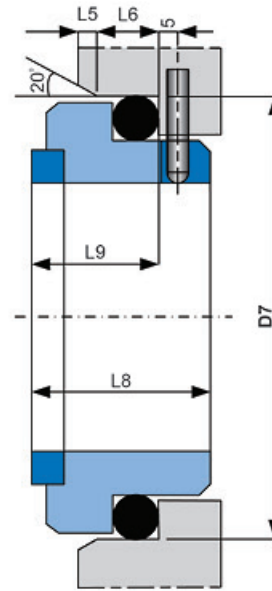
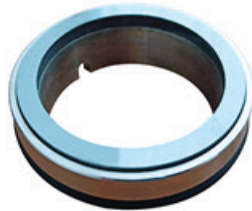


Standard Seat Type G91

- Material : Silicon Carbide (Shink-Fit)



Dimensional Data (mm.)

| D1 | D7 | L5 | L6 | L8 | L9 |
|-----|-----|-----|-----|------|------|
| 10 | 21 | 1.5 | 4.0 | 17.5 | 10.0 |
| 12 | 23 | 1.5 | 4.0 | 17.5 | 10.0 |
| 14 | 25 | 1.5 | 4.0 | 17.5 | 10.0 |
| 16 | 27 | 1.5 | 4.0 | 17.5 | 10.0 |
| 18 | 33 | 2.0 | 5.0 | 19.5 | 11.5 |
| 20 | 35 | 2.0 | 5.0 | 19.5 | 11.5 |
| 22 | 37 | 2.0 | 5.0 | 19.5 | 11.5 |
| 24 | 39 | 2.0 | 5.0 | 19.5 | 11.5 |
| 25 | 40 | 2.0 | 5.0 | 19.5 | 11.5 |
| 28 | 43 | 2.0 | 5.0 | 19.5 | 11.5 |
| 30 | 45 | 2.0 | 5.0 | 19.5 | 11.5 |
| 32 | 48 | 2.0 | 5.0 | 19.5 | 11.5 |
| 33 | 48 | 2.0 | 5.0 | 19.5 | 11.5 |
| 35 | 50 | 2.0 | 5.0 | 19.5 | 11.5 |
| 38 | 56 | 2.0 | 6.0 | 22.0 | 14.0 |
| 40 | 58 | 2.0 | 6.0 | 22.0 | 14.0 |
| 43 | 61 | 2.0 | 6.0 | 22.0 | 14.0 |
| 45 | 63 | 2.0 | 6.0 | 22.0 | 14.0 |
| 48 | 66 | 2.0 | 6.0 | 22.0 | 14.0 |
| 50 | 70 | 2.5 | 6.0 | 23.0 | 15.0 |
| 53 | 73 | 2.5 | 6.0 | 23.0 | 15.0 |
| 55 | 75 | 2.5 | 6.0 | 23.0 | 15.0 |
| 58 | 78 | 2.5 | 6.0 | 23.0 | 15.0 |
| 60 | 80 | 2.5 | 6.0 | 23.0 | 15.0 |
| 63 | 83 | 2.5 | 6.0 | 23.0 | 15.0 |
| 65 | 85 | 2.5 | 6.0 | 23.0 | 15.0 |
| 68 | 90 | 2.5 | 7.0 | 26.0 | 18.0 |
| 70 | 92 | 2.5 | 7.0 | 26.0 | 18.0 |
| 75 | 97 | 2.5 | 7.0 | 26.0 | 18.0 |
| 80 | 105 | 3.0 | 7.0 | 26.2 | 18.2 |
| 85 | 110 | 3.0 | 7.0 | 26.2 | 18.2 |
| 90 | 115 | 3.0 | 7.0 | 26.2 | 18.2 |
| 95 | 120 | 3.0 | 7.0 | 25.2 | 17.2 |
| 100 | 125 | 3.0 | 7.0 | 25.2 | 17.2 |

* Other sizes are available upon request.